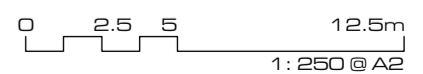


south east elevation (collins street)



south west elevation



1821 - working ELEVATIONS.vwx

elevations 01
proposed development

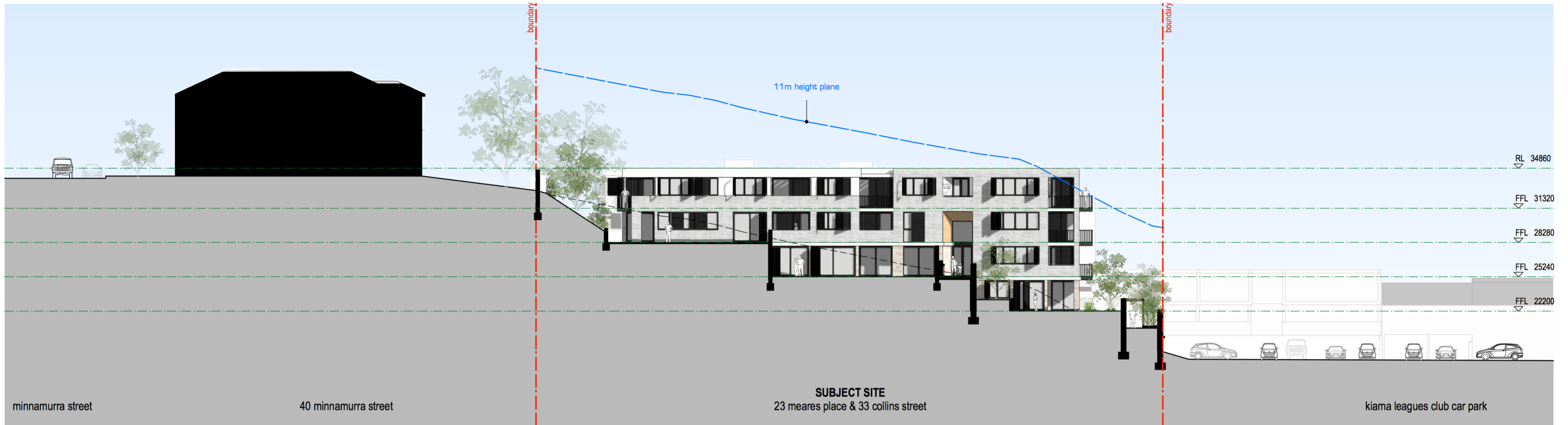
23 Meares Place & 33 Collins Street, KIAMA

kennedy associates architects level 3 / 1 booth street annandale 2038 p + 61 2 9557 6466 f + 61 2 9557 6477 nominated architect - steve kennedy - registration no. 5828

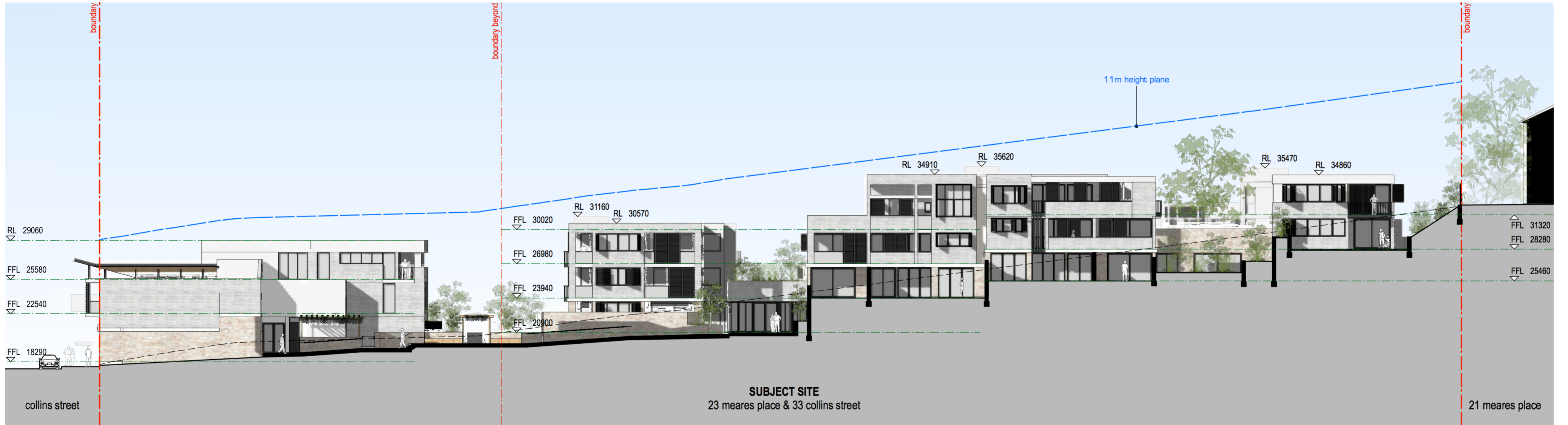


1821 - DA 22 C

C 18/07/18 for S34 meeting



north west elevation (mearse place)



north east elevation

elevations 02
proposed development



1821 - working ELEVATIONS.vwx

23 Meares Place & 33 Collins Street, KIAMA

kennedy associates architects level 3 / 1 booth street annandale 2038 p + 61 2 9557 6466 f + 61 2 9557 6477 nominated architect - steve kennedy - registration no. 5828



1821 - DA 23 C

C 18/07/18 for S34 meeting

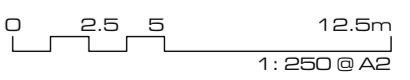


south east elevation (partial)

elevations 03
proposed development

23 Meares Place & 33 Collins Street, KIAMA

kennedy associates architects level 3 / 1 booth street annandale 2038 p + 61 2 9557 6466 f + 61 2 9557 6477 nominated architect - steve kennedy - registration no. 5828

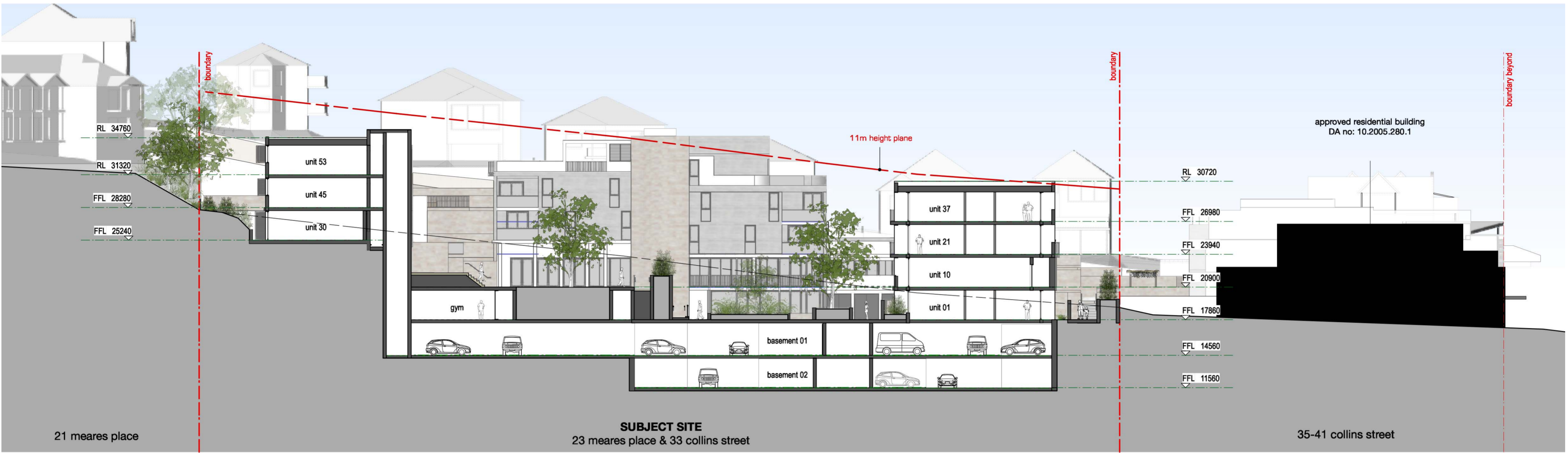


1821 - working ELEVATIONS.vwx

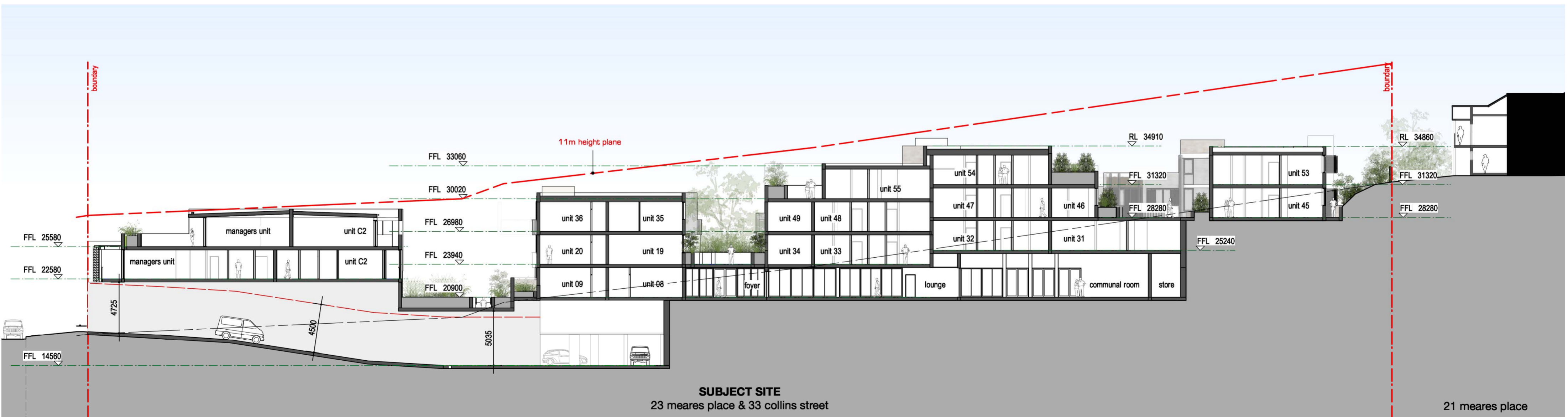


1821 - DA 24 C

C 18/07/18 for S34 meeting



section B



section A

sections 1
proposed development

23 Meares Place & 33 Collins Street, KIAMA

kennedy associates architects level 3 / 1 booth street annandale 2038 p + 61 2 9557 6466 f + 61 2 9557 6477 nominated architect - steve kennedy - registration no. 5828



1821 - DA 25 C

C 18/07/18 for S34 meeting

approved residential building
DA no: 10.2005.280.1



35-41 collins street

SUBJECT SITE
23 meares place & 33 collins street

meares place

section D

approved residential building
DA no: 10.2005.280.1



35-41 collins street

SUBJECT SITE
23 meares place & 33 collins street

meares place

section C

sections 2

proposed development

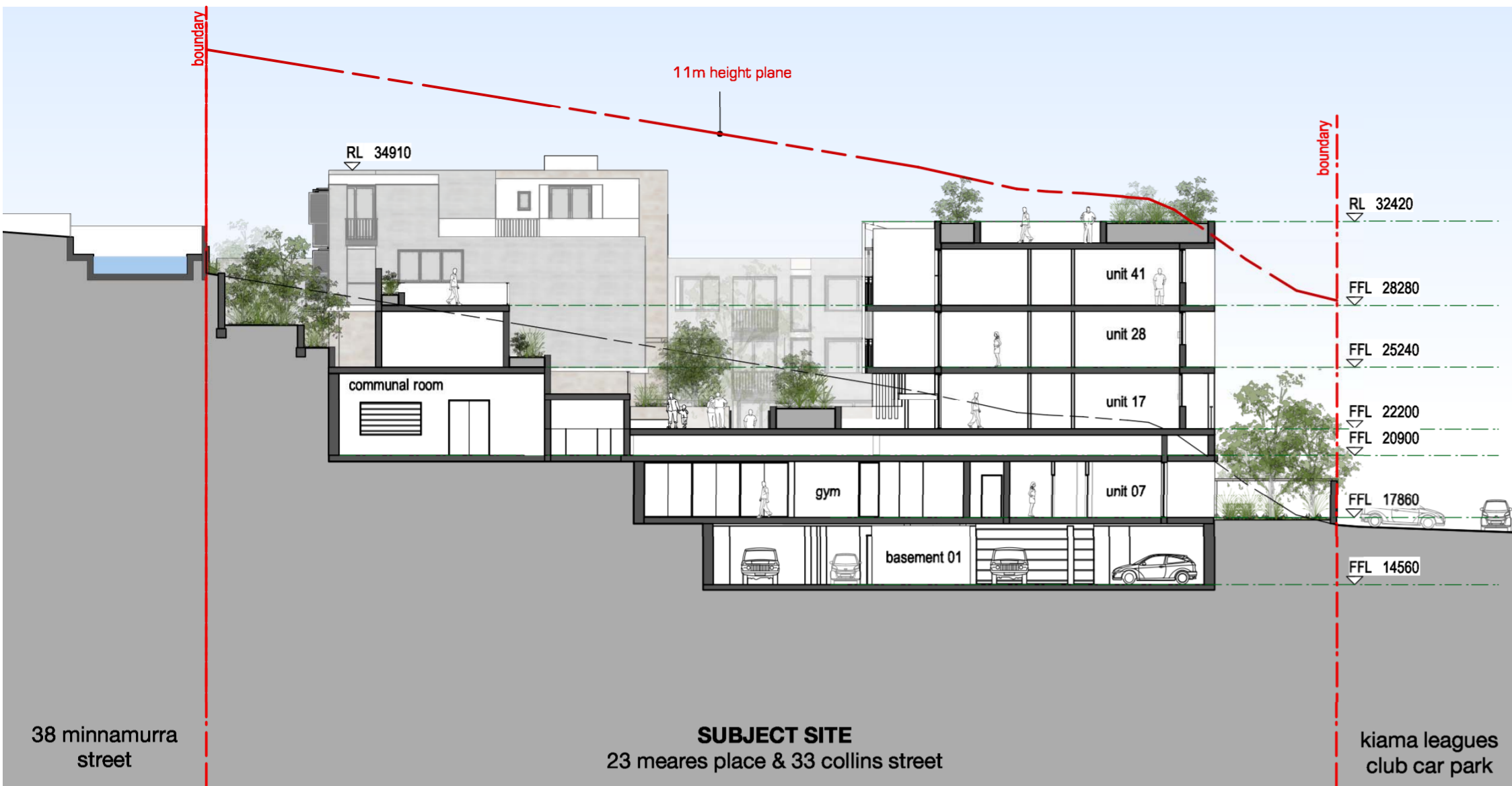
23 Meares Place & 33 Collins Street, KIAMA

kennedy associates architects level 3 / 1 booth street annandale 2038 p + 61 2 9557 6466 f + 61 2 9557 6477 nominated architect - steve kennedy - registration no. 5828

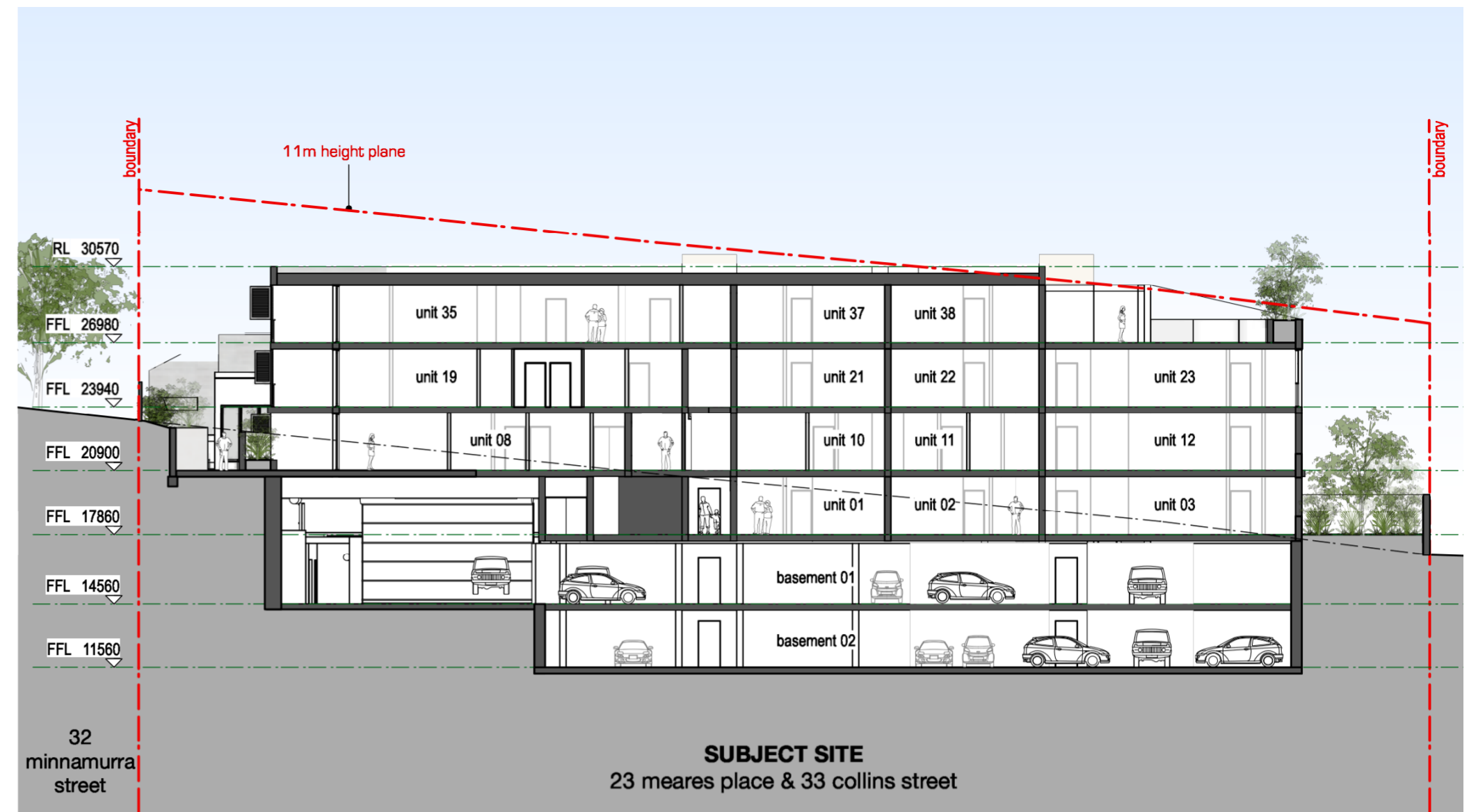


1821 - DA 26 C

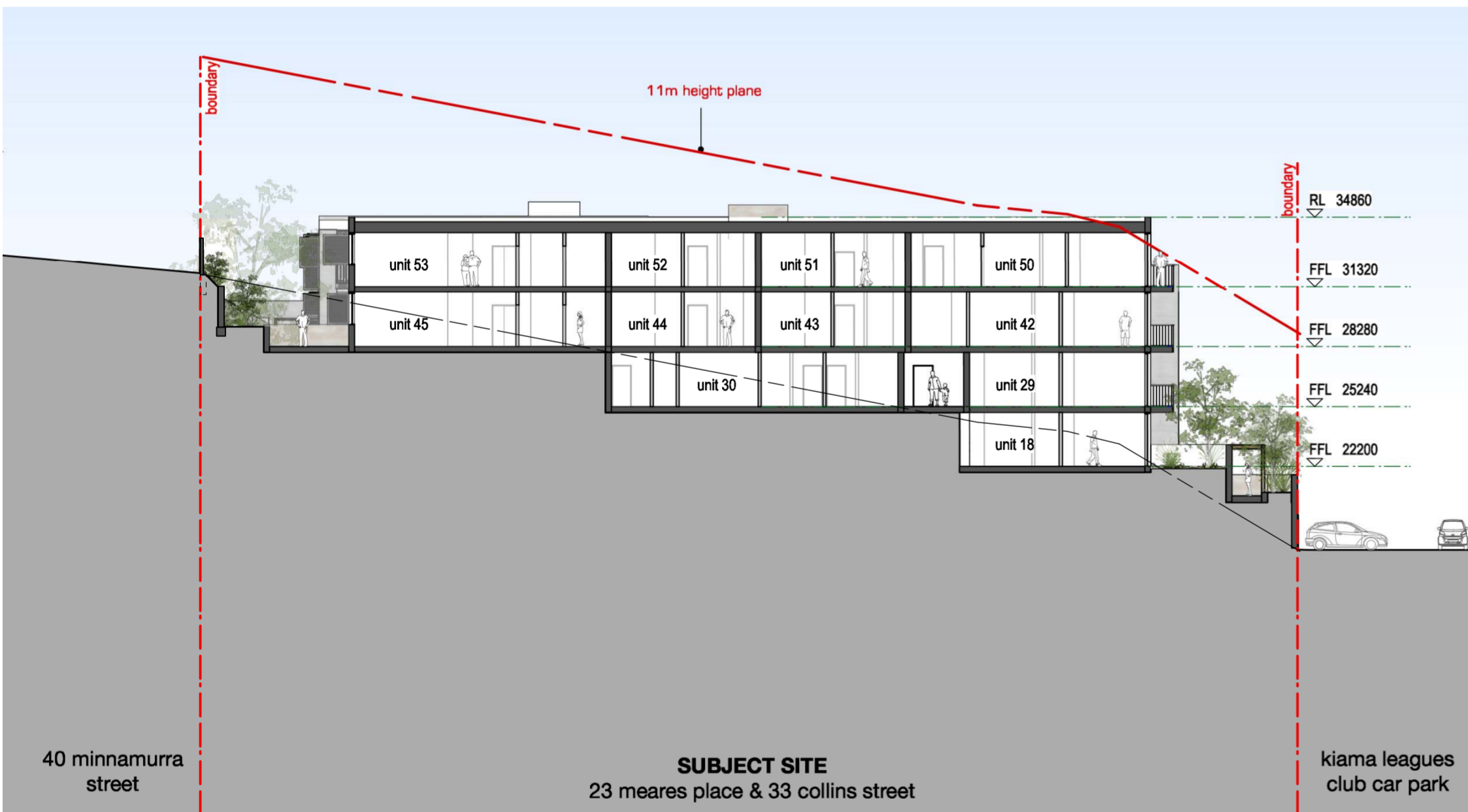
C 18/07/18 for S34 meeting



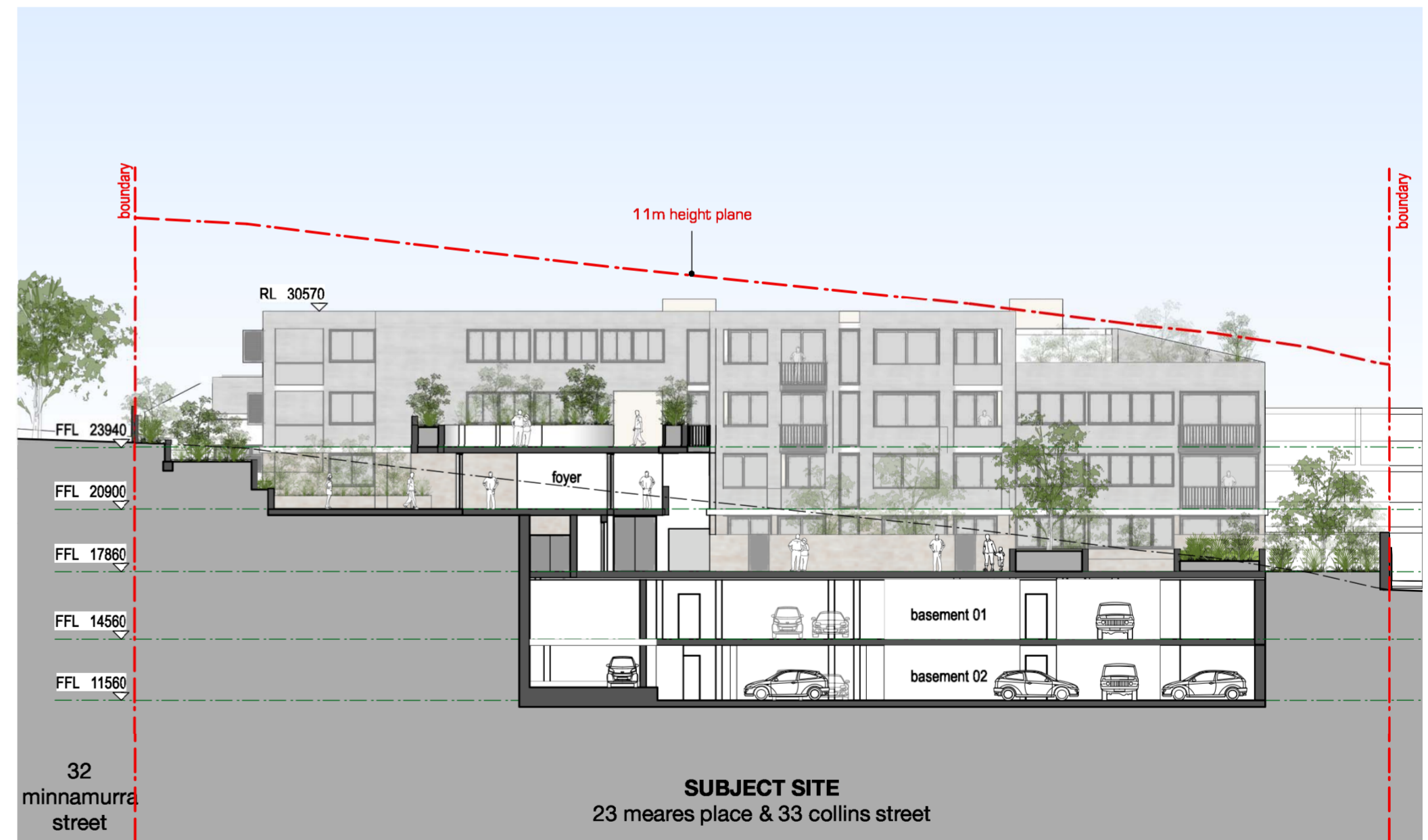
section F



section H



section E



section G

sections 3
proposed development

23 Meares Place & 33 Collins Street, KIAMA

kennedy associates architects level 3 / 1 booth street annandale 2038 p + 61 2 9557 6466 f + 61 2 9557 6477 nominated architect - steve kennedy - registration no. 5828



1821 - DA 27 C

C 18/07/18 for S34 meeting